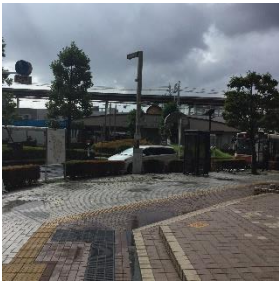


It takes about 13 minutes to walk from **Yatsuka Station** to the campus. In front of the east exit [1] of Yatsuka Station, there is a long street [2]. Go down the street to the intersection [3], then turn right and walk to the river [7]. Walk along the river to the campus [8]. At the entrance to the campus, you will see the AITADE Hall on your left [9]. The reception desk is on the second floor of the building [11]. You can take a taxi to the river [6] in five minutes with a fare of 500 yen, or to the campus [8] with extra money on top of that price. You can also take a bus from the east exit of Yatsuka Station.

[1]



[2]



[3]



[4]



[5]



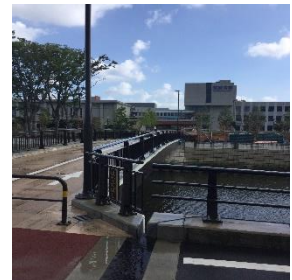
[6]



[7]



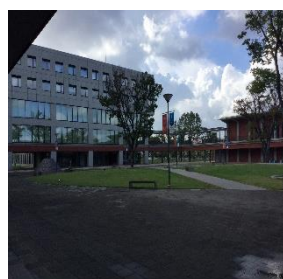
[8]



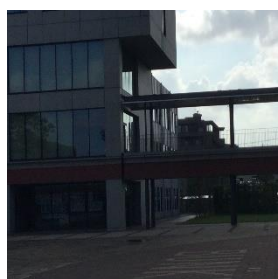
[9]



[10]



[11]



The cafeteria where PAAL participants have lunch is on the first floor, not the second floor.

[12]



A convenience store (Yamazaki Daily Store) will be open from 8:30 to 14:00 on August 17 and 18. Freshly baked Bunkyo University bread will be sold on the 17th, and rice flour bread on the 18th. Those who wish to smoke may do so in the smoking area near the convenience store.

[13]



[14]



[15]

